

# COLLEGE *of* CHARLESTON

---

R.E.A.C.H. PROGRAM



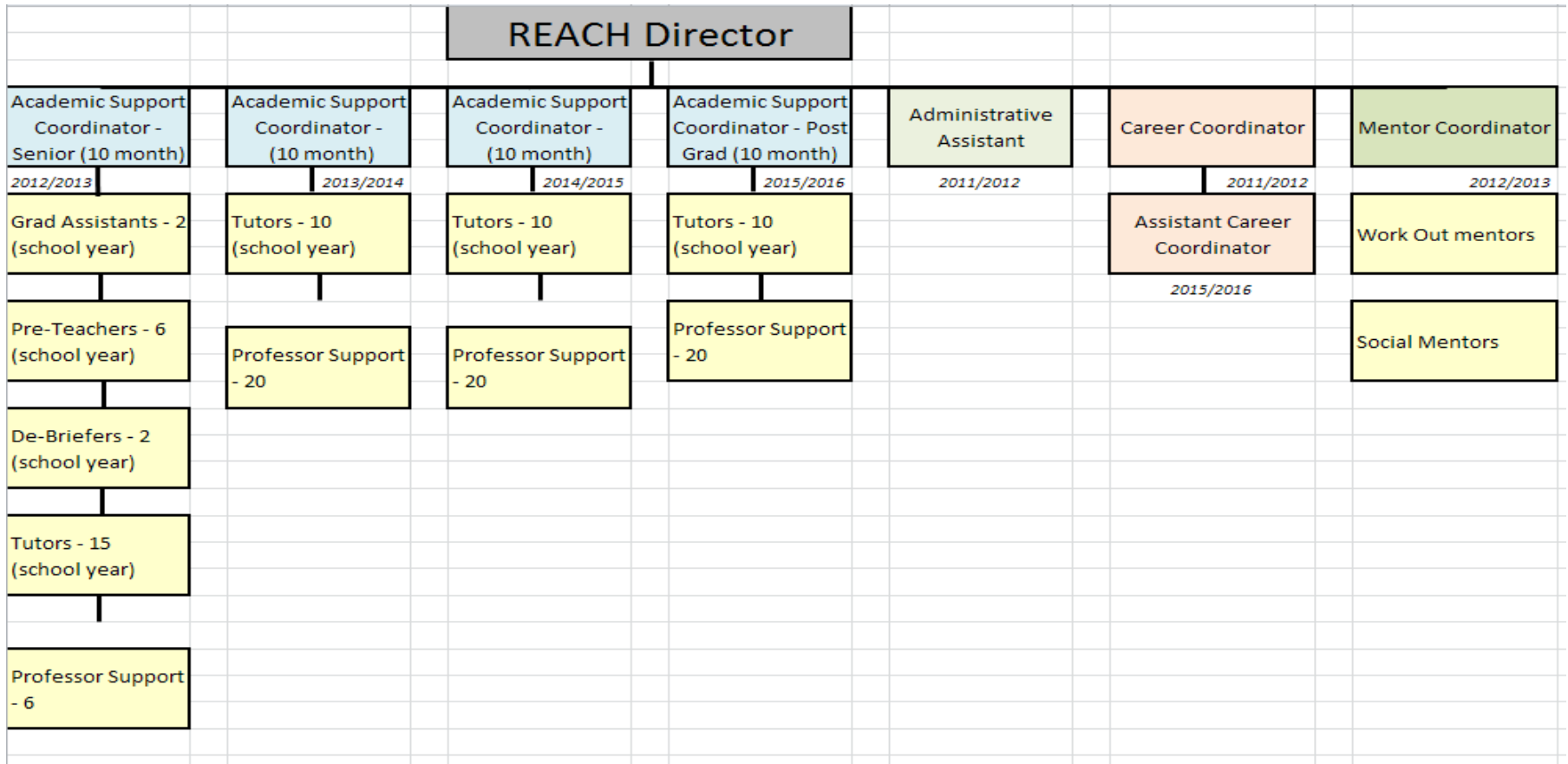
Edie Cusack, Director

# About the REACH Program



- Realizing Educational And Career Hopes (REACH)
- Four year non-degreed ***inclusive*** program designed to benefit not only the students in the REACH program as they develop professionally and socially, but also to benefit the campus community at large.
- Students in the REACH program have access to every aspect of college life: classes with other students, living independently on campus, social events, and even sorority/fraternity life.

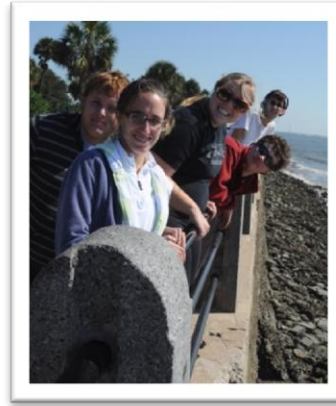
# REACH Staff





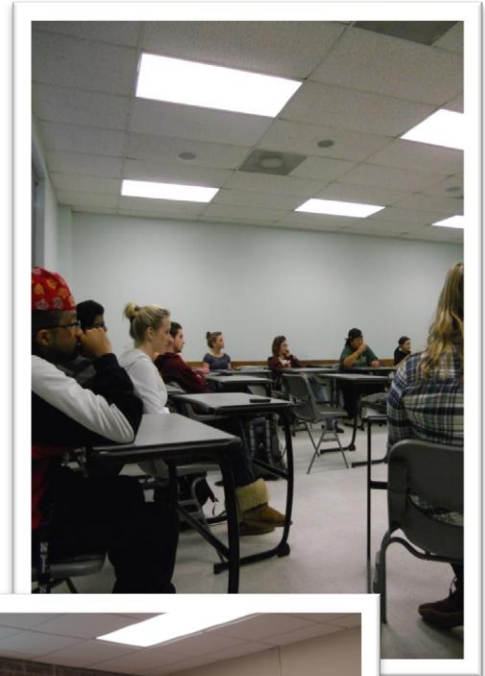
# Four Pillars to Success

- Academic
- Social
- Independent Living
- Career Development



# Academic

- Inclusive Courses\* such as:
  - Psychology
  - Communications
  - Woman and Gender Studies
  - Graphic Novel
- Support Sessions
  - Planning Forum each semester
  - REACH Session
  - Pre-teaching
  - Debriefing
- Professor Training and Tutors



# Tutors

- Training and Orientation
- Weekly Meetings
- Monthly meetings
- Network of Support



## Inclusion on Campus with Academics

“People see me and they’re like ‘You’re in the REACH Program?’

I’m normal. I just get things jumbled up when I learn.”

~WF



# Independent Living

- REACH House located on-campus
- Mentoring
- 50 Steps to Campus Freedom
- Time management
- Cooking, laundry etc.
- Off-Campus Freedom
- Travel training (bus)



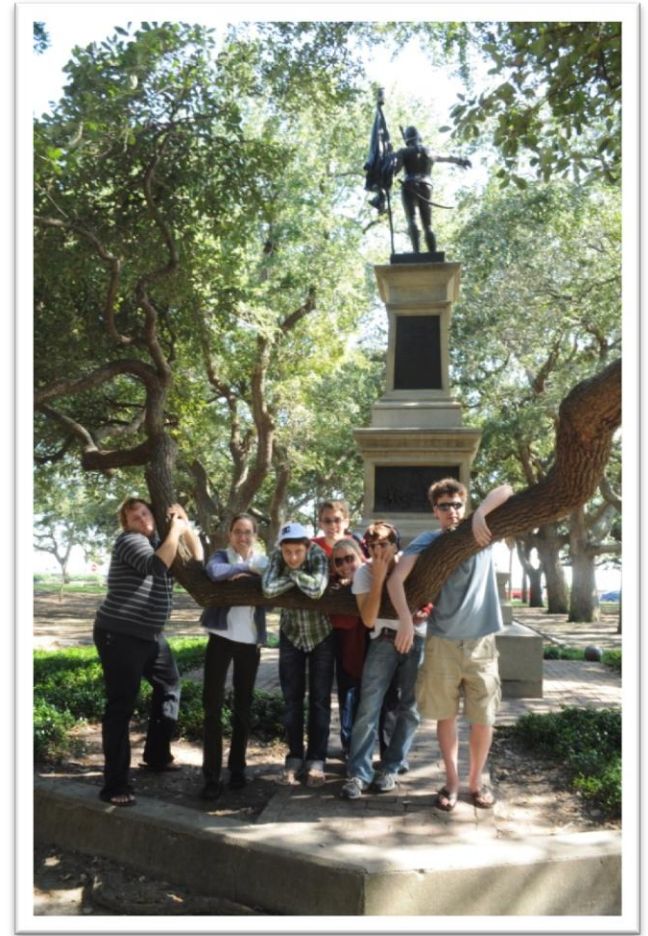


## Independent Living

- “I used to be afraid to talk to people because I knew they wouldn’t like me. I am not afraid anymore.”~ RS
  - “College is really hard but its worth it.”~ DB
    - “ I am treated like a person, not like a disability.”~ RB

# Social Development

- Inclusive practices in a choice of clubs, sorority/fraternity organizations and more!



# Social Mentors

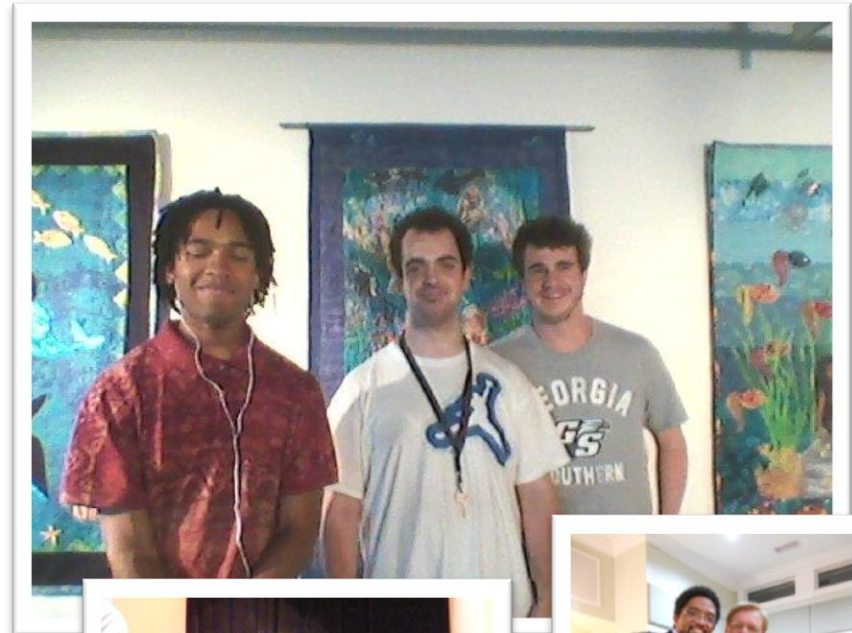
- Training
- Responsibility





## Students have participated in various events:

- Student Union
- Gospel Choir
- WGS meetings
- Sorority/Fraternity Events
- Intermural Sports
- Study groups
- Zumba
- Big Man on Campus
- Party with the Board of Trustees
- MLK Day On Project
- Georgestock



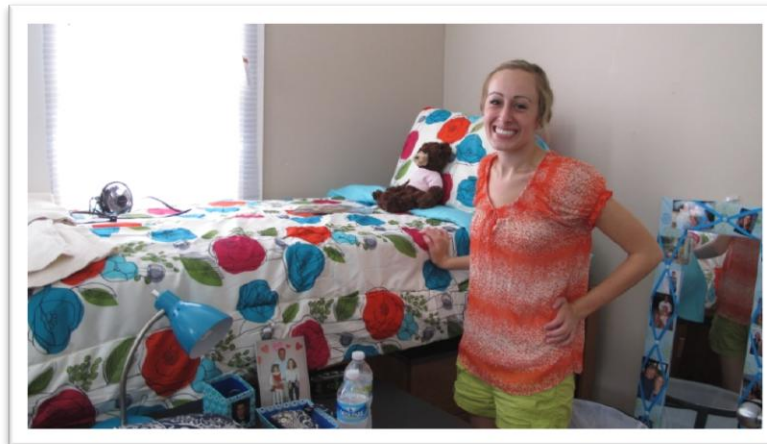
# Career Development: Course work and internships

- On-Campus internships
  - Academic Advising
  - Admissions
  - Library
- Off-Campus
  - Assistant to Director, Marketing
  - YWCA
  - Front Desk
  - Crowne Plaza
  - MUSC



# Greatest Challenges for the students

- Time management
- Study Skills
- Test-taking Skills
- Money Management
- Organizational Skills
- Patience
- Trusting their own judgment





# Application process

- Download the application from our website: [www.reach.cofc.edu](http://www.reach.cofc.edu) by clicking on “Admissions” on the left, then selecting the “APPLICATION” link in the middle of the page.
- Requirements
  - Student Application
  - Student Questionnaire
  - Personal Support Questionnaire
  - Official High School Transcript
  - IEP
  - IDEA Eligible
  - Psychological/Behavioral Evaluation
  - Letters of Recommendation
  - Interview



If you have any questions, please call the  
REACH Offices for more information.

Check our website for more details: <http://reach.cofc.edu>  
and be sure to “Like” us on Facebook for continued updates.

COLLEGE of  
CHARLESTON

R.E.A.C.H. PROGRAM

Edie Cusack

Director of the REACH Program

cusackel@cofc.edu

Candace Lutz

Administrative Assistant

lutzcl@cofc.edu

843-953-4849